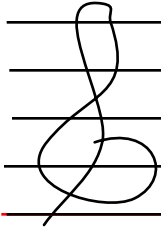


# Let's Imagine that music can be visual - which it can be - and is!

Let's now imagine that these lines on this paper can be assigned to a certain pitch however, the lines actually assign an area of pitch to dots we place on them we call these dots "notes"



Depending how we "assign" this dot it could be one of many pitches.

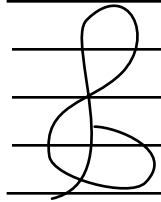


This is called a "treble" clef or a "G" cleff

notice how the "curley-cue" goes around this particular line

This is the line for the note "g"

SO - if that line is a "g" then the space above it would be "a" and the space below it would be "f"

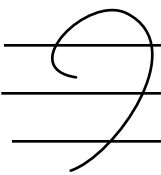


these are the assigned pitches in the treble clef

e f g a b c d e f



the note on this line is usually called "middle c" because it is between the treble clef and the "bass" clef (also known as the "f"clef)



a g f e d c b a